



**Technical Data:**

**DR/SC00030U - DR/SC03000U**

Adjustable operating time for 90° stroke

Air supply 5,5 bar (80 Psi)		
Actuator Type	Min. approx. (Sek.) **	Max. (Sek.) **
HCD DR/SC00030U	2,5	> 20
HCD DR/SC00060U	3	> 20
HCD DR/SC00100U	3,5	> 20
HCD DR/SC00150U	4	> 20
HCD DR/SC00300U	6	> 20
HCD DR/SC00600U	8	> 30
HCD DR/SC01200U	11	> 30
HCD DR/SC03000U	15	> 30

\*\* Actuator operating time without resistance load

The operating times depend on:

- Air supply pressure
- Valve torque
- Adjustment of the speed flow control

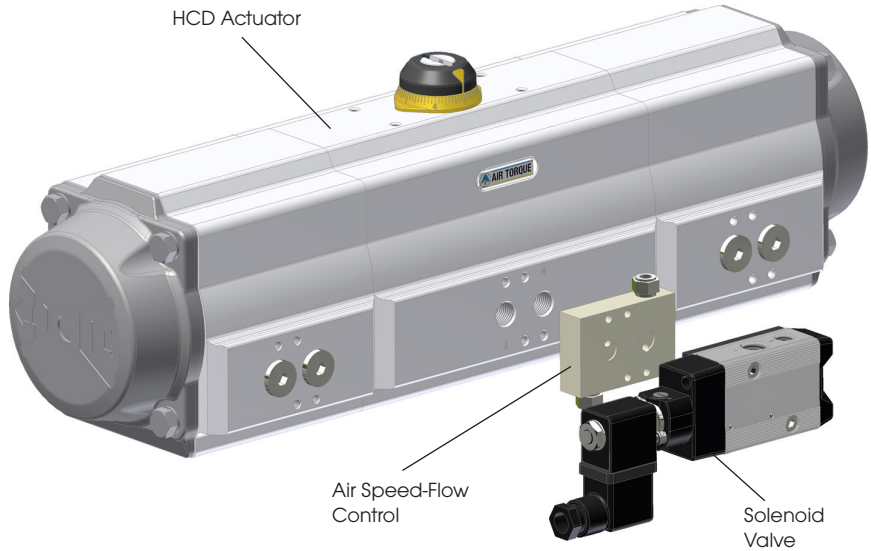
**Function:**

**Flow Capacity Required:**

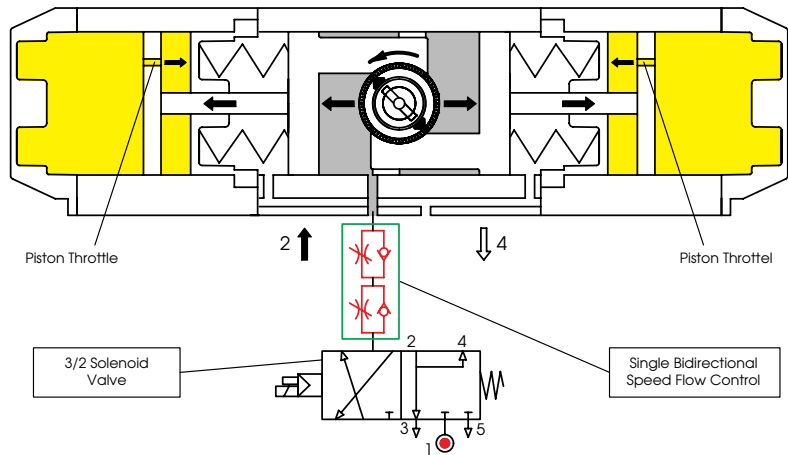
For type HCD DR/SC00030U - 00300U  
0 to 300 NL/min at 5,5 bar (80 psi)

For type HCD DR/SC00600U - 03000U  
0 to 1500 NL/min at 5,5 bar (80 psi)

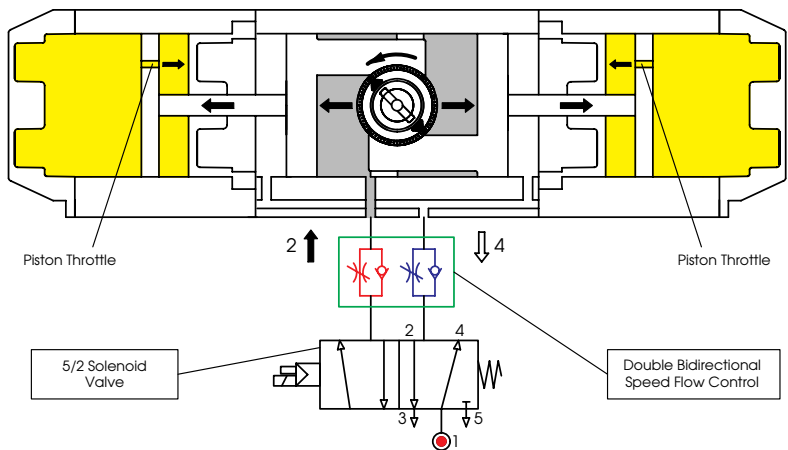
Solenoid valve and speed flow control are not a part of the actuator.



**Type HCD SC00030U => HCD SC03000U: Pneumatic / Hydraulic Circuit Scheme**

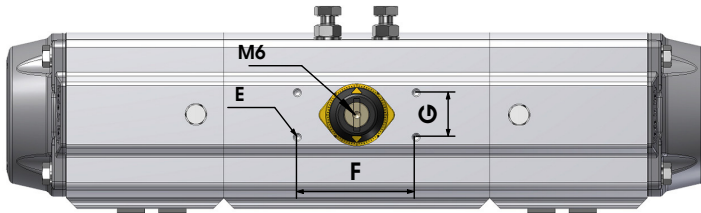
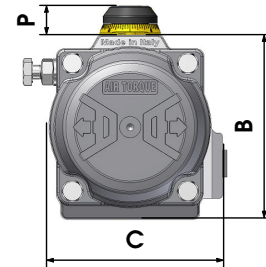
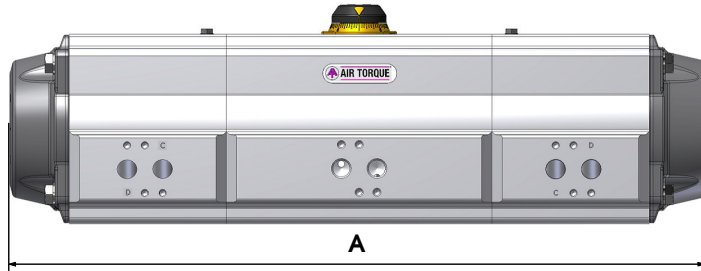


**Type HCD DR00030U => HCD DR03000U: Pneumatic / Hydraulic Circuit Scheme**

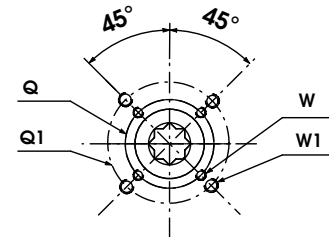




**Dimensions and Technical Data: DR/SC00030U - DR/SC03000U**



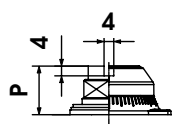
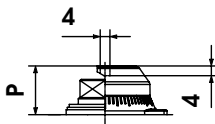
Bottom View ISO 5211



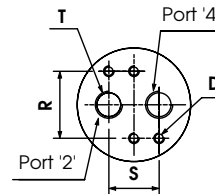
Top Square Drive Shaft

Only for type  
HCD DR/SC00030U

Only for type  
HCD DR/SC00060U - 03000U



Air Connection VDI/VDE 3845



Single  
Square  
PARALLEL



Single  
Square  
DIAGONAL



Square  
DOUBLE

**Actuator Type	A	B	C	D	E	F	G	N	P	R	S	Z1	T - ISO 228	ISO* Flange	Q	Q1	W	W1	ca. Weight in KG	
																			DR**	SC**
HCD DR/SC00030U	283,5	85	84,5	M5x8	M5x8	80	30	11	20	32	24	42	1/8"	F05 + F07	50	70	M6	M8	3,1	3,2
HCD DR/SC00060U	369,5	102	93	M5x8	M5x8	80	30	17	20	32	24	42	1/8"	F05 + F07	50	70	M6	M8	5,7	6,1
HCD DR/SC00100U	432,5	115	106	M5x8	M5x8	80	30	17	20	32	24	42	1/4"	F05 + F07	50	70	M6	M8	6,5	7,5
HCD DR/SC00150U	471	127	118,5	M5x8	M5x8	80	30	17	20	32	24	42	1/4"	F07 + F10	70	102	M8	M10	11	12
HCD DR/SC00300U	614,5	157	146,5	M5x8	M5x8	80	30	27	30	32	24	58	1/4"	F07 + F10	70	102	M8	M10	21,5	23
HCD DR/SC00600U	760,5	196	181	M5x8	M5x8	80	30	27	30	32	24	67,5	1/4"	F10 + F12	102	125	M10	M12	45	49,5
HCD DR/SC01200U	964	245	221,5	M5x8	M5x8	130	30	36	50	32	24	80	1/4"	F14	140	-	M16	-	75	84
HCD DR/SC03000U	1254	330	330	M6x10	M5x8	130	30	36	50	45	40	115	1/2"	F16	165	-	M20	-	160	180

\* Note: Other connections available. Dimensions in mm.

\*\* DR = double acting / SC = spring return with 6 springs per side

**Specification:**

Max. supply pressure: 6,5 bar (95 psi)  
Operating pressure: 2,5 - 6,5 bar  
Hydraulic fluid biodegradable.

Other dimensions: see data sheet of standard actuator  
Operating media: see AIR TORQUE manual instruction  
Temperature: -20°C to +80°C

Important Note: For a correct operation of this actuator we suggest a torque sizing based on a safety factor of at least 30%.